

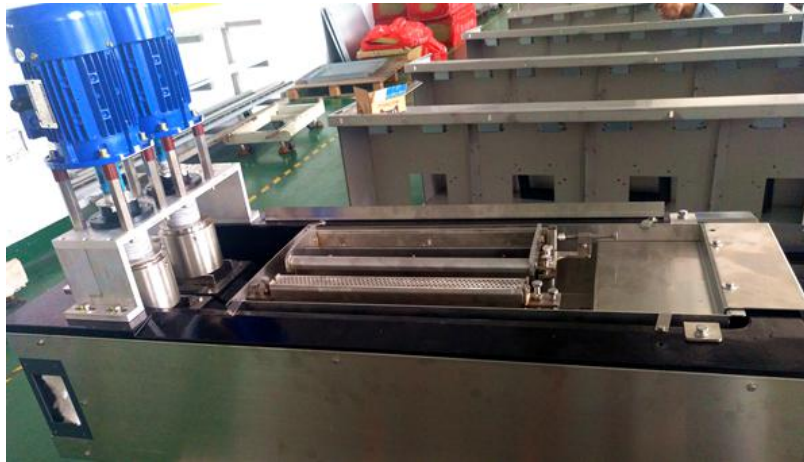
## wave soldering machine S-WS350



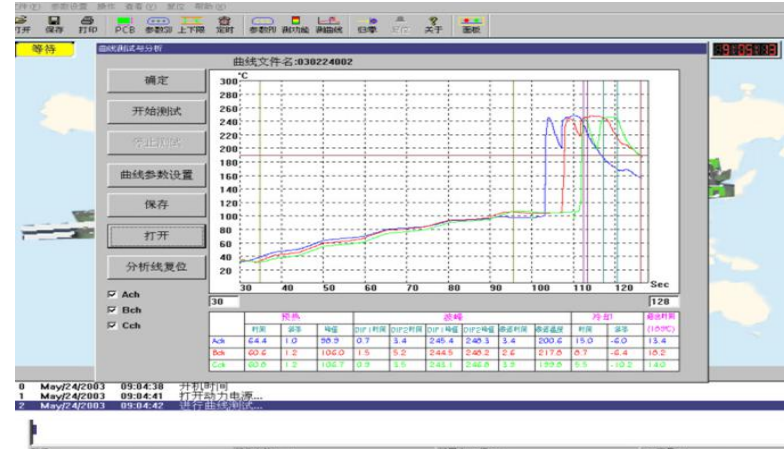
## Products Introduction:

- Designed for lead-free process,
- Overall appearance adopt electrostatic powder coating, no dropping painting,
- The maintenance door all can be take down, its streamline appearance,
- Machine controlled by PC with WinfyXP O/S, dynamic monitor utilize graph, words & profiles to show system state,such as alarm, operation guide etc.,
- Configure PLC control the whole machine, communication to PC with MIDBUS Protocol, it's stable and prevent machine crashed,
- Conveyor belt width is easily changed by manual,
- Configure with PCB entrance guide system, have no used for PCB loading machine, it save money for you.
- Flux spray system adopt Germany FEST stockless cylinder and KaiT professional liquid nozzle, the nozzle is never damage,

# Features:



High quality titanium tin furnace



Tin furnace temperature control



Safe hot air preheating



automatic remove tank

- Preheated heater adopt far infrared lamp to supply continues heating capability, to reduce thermal shock for PCB,
- Lead-free soldering pot with low Tin oxide design wave nozzle, special for nozzle width, liquid Tim speed and thick adjustable,
- Taiwan TCG high temperature wave motor, with step-less change and control independent,
- Auto-start up /shut down accordingly customer setting time and date.
- Automatic finger clean system,
- With acoustic-optic alarm and Emergency stop protection,
- Special Nitrogen inject system design to ensure soldering effect, Nitrogen consumption is lowest in SMT's profession.

PCB adjustable width: Max.50~350MM

PCB transport height: 750 ± 50 mm

PCB best welding speed: 1500-1800 - mm/Min

(welding Angle) : 3 ~ 7 degrees

Welding Angle display: Gravity Angle display

Element height restrictions: Max.150mm

Wave height range: 0-15 mm flat

Wave number: 2

Preheating zone length: 1800 mm

Number of preheating zone: 3

Preheating zone power: 8 kw

Preheating zone temperature: room temperature to 250 °C adjustable

Heating method: hot air//Or infrared preheating

Number of cooling zone: 2

Cooling: forced cooling fan

Cooling area: 2

Apply solder type: lead-free solder Tin furnace power: 12 kw  
automatic remove tank

Dissolve tin amount : Approx. 380 kg

Tin stove material: titanium solder pot

Tin tin stove type: 4th generation and energy saving furnace (50-350 adjustable)

Tin stove temperature: room temperature to 350 °C, the control precision ± 1 - 2 °C

Tin stove temperature control precision: ± 1°

Outline dimension:L4200×W1350×H1650MM

Titanium alloy reinforced titanium claw, titanium claw thickness 2.0mm, deformation resistance up to 20kg / cm

## wave soldering PCB inlet and outlet conveyor



- The discharge of the wave soldering is specially used in the output device connected after dual wave soldering of the PCB
- The angle of the gradient of the front and back end can be adjusted by the screw respectively
- The anti-skidding belt allows stable conveying and the speed is adjustable
- The special belt adopts punching belt with electrical fan adding on it to help cooling the PCB
- Conveyor speed: 1~1800mm/min
- Power supply: AC220V 50HZ

Model	Dimension (L*W*H.MM)	Effection PCB size	Weight(KG)
S-Z460	1200*600*1150	50*400	50KG

## Welcome To Visit Our Manufacturing Workshop



# Shenzhen Southern Machinery Sales And Service Co., Ltd

1. One-stop Shopping, Providing Quality Smt Peripheral Equipment,
2. Experienced Engineers Provide After-sales Installation & Training Services.
3. Customized Solutions.
4. All Equipment Has Ce Certification, UI Certification.RoHS Certification
5. Provide Sea Freight, Customs Clearance Delivery Service.



## OUR CLIENTS

